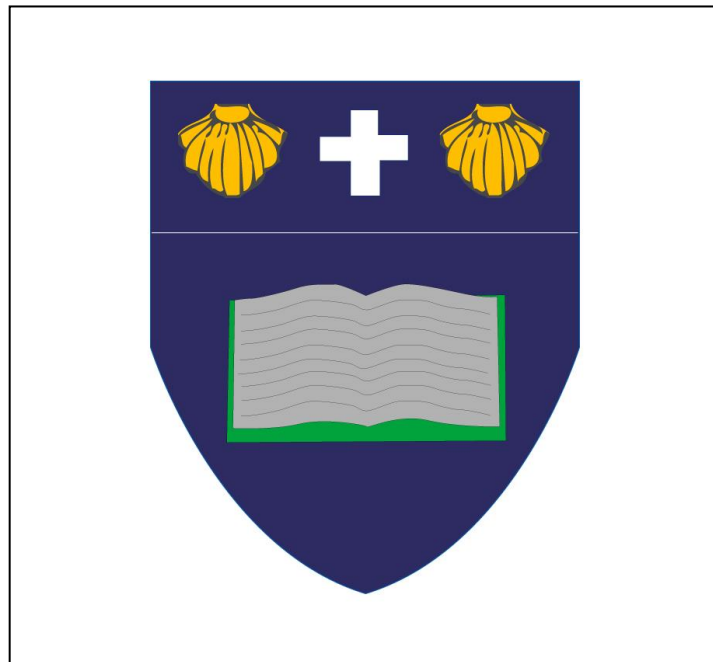


Westleigh Methodist Primary School Safeguarding & Child Protection Policy



Written by:	J Buckley – Oct 2018
Date agreed:	Dec 2018
Next Review Date:	Sept 2019
Chairs Signature	

Contents:

Mission statement

1. Definitions
2. Legal framework
3. Roles and responsibilities
4. Inter-agency working
5. Abuse and neglect
6. Types of abuse and neglect
7. Female genital mutilation (FGM)
8. Forced marriage
9. Child sexual exploitation (CSE)
10. **[New for 2018]** Honour based Violence
11. **[New for 2018]** Homelessness
12. **[New for 2018]** County lines criminal activity
13. **[New for 2018]** Pupils with family members in prison
14. **[New for 2018]** Pupils required to give evidence in court
15. **[New for 2018]** Contextual safeguarding
16. Preventing radicalisation
17. A child missing from education
18. Pupils with SEND
19. **[New for 2018]** Alternative provision
20. **[New for 2018]** Work experience
21. **[New for 2018]** Homestay exchange visits
22. **[New for 2018]** Private fostering
23. Concerns about a pupil
24. **[New for 2018]** Early help
25. Managing referrals
26. Concerns about staff members and safeguarding practices
27. Dealing with allegations of abuse against staff
28. **[Updated for 2018]** Allegations of abuse against other pupils (peer-on-peer abuse)
29. Communication and confidentiality
30. Online safety
31. Safer recruitment
32. Single central record (SCR)
33. Staff suitability
34. Training
35. Monitoring and review

Appendices

- a) Safeguarding Reporting Process
- b) Contacts and Advice

Mission Statement

Westleigh Methodist Primary School aspires to be a Christian family where all can develop to their full potential.

We aim to promote the value of self, others and the environment

Our Vision:

The vision of Westleigh Methodist Primary School is to maintain a small, Christian school where the SLT and staff are knowledgeable about each child's abilities and challenges so that we can offer the most effective support for each individual child to meet those challenges, grow completely as a "well rounded" person and increase his/her skills to perform successfully in all academic areas

Our Mission:

Underpinning our Mission Statement, we seek to sustain a Christian, educational community where:

✓ An emphasis on academic excellence is complemented by our concern for each learner's personal growth and spiritual, intellectual, aesthetic, and psychological development.

The curriculum is developmentally responsive, actively engaging children in learning skills in a context; integrative – directing children to connect learning to daily lives; and exploratory – enabling children to discover their abilities, interests, learning styles, and ways that they can make contributions to society

Safeguarding Statement

At Westleigh Methodist Primary School we recognise our moral and statutory responsibility to safeguard and promote the welfare of all children.

We work to provide a safe and welcoming environment where children are respected and valued. We are alert to the signs of abuse and neglect and follow our procedures to ensure that children receive effective support, protection and justice.

The procedures contained in the Safeguarding Policy apply to all staff, volunteers and governors.

School details

Governors' Committee Responsible: Safeguarding Committee

Governor Lead: Mrs Elizabeth Smith

Trustee Lead: Mrs June Todd

Nominated Lead Member of Staff: Mrs Amy Burkes

Deputy Designated Member of Staff: Mrs Sarah Williams

Nominated Designated Members of Staff: Ms Xanthe Moragrega, Mrs Jane Mulqueeney

Local Authority Designated Officer (LADO): Diane Kitcher

LADO telephone number: 01942 4860342

LADO out of normal office hours: 01942 828300

LADO Email: lado@wigan.gov.uk

Status & Review Cycle: Statutory Annual

Next Review Date: September 2019

1. Definitions

- 1.1. **[Clarified for 2018]** The terms “**children**” and “**child**” refer to anyone under the age of 18.
- 1.2. For the purposes of this policy, “**safeguarding and protecting the welfare of children**” is defined as:
 - Protecting pupils from maltreatment.
 - Preventing the impairment of pupils’ health or development.
 - Ensuring that pupils grow up in circumstances consistent with the provision of safe and effective care.
 - Taking action to enable all pupils to have the best outcomes.
- 1.3. For the purposes of this policy, the term “**harmful sexual behaviour**” includes, but is not limited to, the following actions:
 - Using sexually explicit words and phrases
 - Inappropriate touching
 - Sexual violence or threats
 - Full penetrative sex with other children or adults
- 1.4. In accordance with the DfE’s guidance, ‘Sexual violence and sexual harassment between children in schools and colleges’ (2017), and for the purposes of this policy, the term “**sexual harassment**” is used within this policy to describe any unwanted conduct of a sexual nature, both online or offline, which violates a child’s dignity and makes them feel intimidated, degraded or humiliated, and can create a hostile, sexualised or offensive environment.
- 1.5. For the purpose of this policy, the term “**sexual violence**” encompasses the definitions provided in the Sexual Offences Act 2003, including those pertaining to rape, assault by penetration and sexual assault.
- 1.6. **[Clarified for 2018]** The term “**teaching role**” is defined as planning and preparing lessons and courses for pupils; delivering lessons to pupils; assessing the development, progress and attainment of pupils; and reporting on the development, progress and attainment of pupils. These activities are not teaching work if the person carrying out the activity does so (other than for the purposes of induction) subject to the direction and supervision of a qualified teacher or other person nominated by the headteacher to provide such direction and supervision.
- 1.7. **[New]** For the purposes of this policy, “**upskirting**” refers to the act of taking a picture or video under another person’s clothing, without their knowledge or consent, with the intention of viewing that person’s genitals or buttocks (with or without clothing). Despite the name, anyone (including both pupils and teachers), and any gender, can be a victim of upskirting.

2. Legal framework

- 2.1. This policy has been created with due regard to all relevant legislation including, but not limited to, the following:

Legislation

- Children Act 1989

- Children Act 2004
- Safeguarding Vulnerable Groups Act 2006
- The Education (School Teachers' Appraisal) (England) Regulations 2012 (as amended)
- Sexual Offences Act 2003
- [\[New for 2018\]](#) General Data Protection Regulation (GDPR)
- The Childcare (Disqualification) Regulations 2009
- Counter Terrorism and Security Act 2015
- Female Genital Mutilation Act 2003
- Childcare Act 2006 (section 40)

Statutory guidance

- HM Government (2014) 'Multi-agency practice guidelines: Handling cases of Forced Marriage'
- HM Government (2016) 'Multi-agency statutory guidance: Female Genital Mutilation'
- DfE (2018) 'Working together to safeguard children'
- DfE (2015) 'What to do if you're worried a child is being abused'
- DfE (2015) 'Information sharing'
- DfE (2015) 'The Prevent duty'
- [\[New for 2018\]](#) DfE (2018) 'Keeping children safe in education'
- DfE (2016) 'Disqualification under the Childcare Act 2006'
- DfE (2017) 'Child sexual exploitation'
- [\[New for 2018\]](#) DfE (2018) 'Sexual violence and sexual harassment between children in schools and colleges'
- [\[New for 2018\]](#) The Childcare (Disqualification) and Childcare (Early Years Provision Free of Charge) (Extended Entitlement) (Amendment) Regulations 2018 ("the 2018 Regulations")

2.2. Other relevant Trust/School policies include:

- Allegations of Abuse Against Staff Policy
- Behaviour Management
- Staff Code of Conduct
- Whistleblowing,
- Anti-bullying,
- Health & Safety
- Allegations against staff,
- Complaints,
- Attendance,
- PSHE
- Teaching and Learning
- Supporting Children with Medical Conditions
- Sex and Relationships Education
- ICT, including Online-Safety
- Risk Assessments
- Recruitment & Selection
- Intimate Care
- Mobile phone policy
- Missing from Education

- Missing Child Policy

This policy should also be read in conjunction with Wigan Council's Threshold of Need Document/Procedure and Wigan Council's Escalation Policy, in addition to the Greater Manchester policies for 'Working with adults and children/young people vulnerable to messages of violent extremism' and 'Child Sexual Exploitation'. All appropriate policies can be found here: <https://www.wigan.gov.uk/WSCB/index.aspx>

3. Roles and responsibilities

- 3.1. Under The Education (Independent School Standards) Regulations 2014, the Acorn Trust (the proprietor) will ensure arrangements for safeguarding and promoting the health, safety and welfare of pupils, which have regard to any guidance including where appropriate, the National Minimum Standards, about safeguarding and promoting the health, safety and welfare of pupils have been made.
- 3.2. For each of its school, the school's Local Advisory Board is given the responsibility to safeguard and promote the welfare of the children within its school; and to work together with other agencies to ensure there are adequate arrangements within school to identify, assess, and support those children who are suffering harm. They will:
 - ensure that the schools comply with their duties under the above child protection and safeguarding legislation.
 - guarantee that the policies, procedures and training opportunities in the schools are effective and comply with the law at all times.
 - guarantee that the schools contribute to inter-agency working in line with the statutory guidance Working Together to Safeguard Children (2018).
 - confirm that the schools' safeguarding arrangements take into account the procedures and practices of the LA as part of the inter-agency safeguarding procedures.
 - comply with its obligations under section 14B of the Children Act 2004 to supply the local safeguarding arrangements with information to fulfil its functions.
 - ensure that a member of the Local Advisory Board is nominated to liaise with the LA and/or partner agencies on issues of child protection.
 - ensure that a member of the Trustee Board is nominated to liaise with the LA and/or partner agencies on issues of child protection in the event of allegations of abuse made against the CEO and/or headteachers, or another Trustee/Local Advisory Committee representative.
 - guarantee that there are effective child protection policies and procedures in place together with a staff code of conduct.
 - appoint a member of staff from the senior leadership teams (SLT) to the role of DSL as an explicit part of the role-holder's job description in each school.
 - appoint one or more deputy DSLs to provide support to the DSL, and ensure that they are trained to the same standard as the DSL and that the role is explicit in their job description(s).
 - make sure that pupils are taught about safeguarding, including protection against dangers online, through teaching and learning opportunities, as part of providing a broad and balanced curriculum.
 - adhere to statutory responsibilities to check staff who work with children, taking proportionate decisions on whether to ask for any checks beyond what is required.
 - ensure that staff members are appropriately trained to support pupils to be themselves at school, e.g. if they are LGBT.
 - guarantee that volunteers are appropriately supervised and checked against prohibition
 - make sure that at least one person on any appointment panel has undertaken safer recruitment training.

- ensure that all staff members receive safeguarding and child protection training updates, such as e-bulletins, emails and staff meetings, as required, but at least annually.
- certify that there are procedures in place to handle allegations against members of staff or volunteers.
- confirm that there are procedures in place to make a referral to the DBS if a person in regulated activity has been dismissed or removed due to safeguarding concerns or would have been had they not resigned.
- guarantee that there are procedures in place to handle pupils' allegations against other pupils.
- ensure that appropriate disciplinary procedures are in place, as well as policies pertaining to the behaviour of pupils and staff.
- ensure that procedures are in place in order to eliminate unlawful discrimination, harassment and victimisation, including those in relation to peer-on-peer abuse.
- make sure that pupils' wishes and feelings are taken into account when determining what action to take and what services to provide to protect individual pupils.
- guarantee that there are systems in place for pupils to express their views and give feedback.
- establish an early help procedure and ensure all staff understand the procedure and their role in it.
- appoint a designated teacher to promote the educational achievement of LAC and ensure that this person has undergone appropriate training.
- ensure that the designated teacher works with the Virtual School Head to discuss how the pupil premium funding can best be used to support LAC.
- introduce mechanisms to assist staff in understanding and discharging their roles and responsibilities.
- make sure that staff members have the skills, knowledge and understanding necessary to keep LAC safe, particularly with regards to the pupil's legal status, contact details and care arrangements.
- put in place appropriate safeguarding responses for pupils who go missing from school, particularly on repeat occasions, to help identify any risk of abuse and neglect, including sexual abuse or exploitation, and prevent the risk of their disappearance in future.
- ensure that all members of the Trust Board and Local Advisory Committees have been subject to an enhanced DBS check and 128 checks

3.3. The Headteacher has a duty to:

- safeguard pupils' wellbeing and maintain public trust in the teaching profession.
- ensure that the policies and procedures adopted by the Board of Trustees, particularly concerning referrals of cases of suspected abuse and neglect, are followed by staff members.
- **[Updated for 2018]** provide staff, upon induction, with the Safeguarding and Child Protection Policy, Staff Code of Conduct, part one of the Keeping Children Safe in Education (KCSIE) (2018) guidance, Behaviour Management Policy, Children Missing from Education Policy, online safety training, and the identity of the DSL and any deputies.
- ensure volunteers and visitors are aware of who is the DSL and the procedures to follow via the Inventory signing-in system, school leaflet and the volunteer code of conduct.

3.4. The DSL has a duty to:

- refer all cases of suspected abuse to children's social care services (CSCS), the LA designated officer (LADO) for child protection concerns, the DBS, and the police in cases where a crime has been committed.
- refer cases of radicalisation to the Channel programme.
- liaise with the Headteacher to inform him/her of safeguarding issues, especially ongoing enquiries under section 47 of the Children Act 1989 and police investigations.
- liaise with the deputy DSL(s) to ensure effective safeguarding outcomes.
- act as a source of support, advice and expertise to staff members on matters of safeguarding by liaising with relevant agencies.
- understand the assessment process for providing early help and intervention.
- support staff members in liaising with other agencies and setting up inter-agency assessment where early help is deemed appropriate.
- keep cases of early help under constant review and refer them to the CSCS if the situation does not appear to be improving.
- have a working knowledge of how LAs conduct a child protection case conference and a child protection review conference, and be able to attend and contribute to these effectively when required to do so.
- ensure each member of staff has access to and understands the school's Safeguarding and Child Protection Policy and procedures – this will be discussed during the staff induction process.
- be alert to the specific requirements of children in need, including those with SEND and young carers.
- keep detailed, accurate and secure records of concerns and referrals.
- ensure all staff have appropriate access to CPOMS so all incidents can be noted
- secure access to resources and attend any relevant training courses.
- encourage a culture of listening to children and taking account of their wishes and feelings.
- work with the Governing Body to ensure the school's Safeguarding and Child Protection Policy is reviewed annually and the procedures are updated regularly.
- ensure the school's Safeguarding and Child Protection Policy is available publicly, and parents are aware that the schools may make referrals for suspected cases of abuse or neglect, as well as the role the schools play in these referrals.
- link with local safeguarding arrangements to make sure that staff members are aware of the training opportunities available and the latest local policies on safeguarding.
- ensure that a pupil's child protection file is copied when transferring to a new school.
- be available at all times during school hours to discuss any safeguarding concerns.
- **[New for 2018]** hold the details of the LA personal advisor and liaise with them as necessary.

NB. The school will determine what "available" means, e.g. it may be appropriate to be accessible by electronic means such as phone or Skype.

At **Westleigh Methodist**, these roles are undertaken by:

- Mrs Amy Burkes (Designated Safeguarding Lead)
- Mrs. Sarah Williams (Designated Safeguarding Lead)
- Mrs. Betty Smith is the named Governor for Child Protection
- Mrs June Todd is the named Trustee for Child Protection.

There are also other Nominated Designated Members of Staff:

- Mrs Jane Mcqueeney,
- Mrs Xanthe Moragrega,

3.5. **[Updated for 2018]** The designated teacher has a responsibility for promoting the educational achievement of LAC and previously LAC, and for children who have left care through adoption, special guardianship or child arrangement orders or who were adopted from state care outside England and Wales.

3.6. Other staff members have a responsibility to:

- safeguard pupils' wellbeing and maintain public trust in the teaching profession as part of their professional duties.
- provide a safe environment in which pupils can learn.
- act in accordance with school's procedures with the aim of eliminating unlawful discrimination, harassment and victimisation, including those in relation to peer-on-peer abuse.
- maintain an attitude of 'it could happen here' where safeguarding is concerned.
- be aware of the signs of abuse and neglect.
- be aware of the early help process and understand their role in it.
- act as the lead professional in undertaking an early help assessment, where necessary.
- be aware of, and understand, the process for making referrals to CSCS, as well as for making statutory assessments under the Children Act 1989 and their role in these assessments.
- support social workers to take decisions about individual children, in collaboration with the DSL.
- make a referral to CSCS and/or the police immediately, if at any point there is a risk of immediate serious harm to a child,
- be aware of and understand the procedure to follow in the event that a child confides they are being abused or neglected.
- support social workers in making decisions about individual children, in collaboration with the DSL.
- maintain appropriate levels of confidentiality when dealing with individual cases, and always act in the best interest of the child.
- follow the school's procedure for, and approach to, preventing radicalisation and complete PREVENT training.
- record all concerns onto CPOMS as well as reporting them to the DSL

4. Inter-agency working

4.1. The schools contribute to inter-agency working as part of their statutory duty.

4.2. The schools will work with CSCS, the police, health services and other services to protect the welfare of its pupils, through the early help process and by contributing to inter-agency plans to provide additional support.

4.3. The schools recognise the importance of information sharing between professionals and local agencies in order to effectively meet pupils' needs.

4.4. In light of the above, staff members are aware that whilst the GDPR places a duty on schools to process personal information fairly and lawfully, it is not a barrier to sharing information where failure to do so would result in the pupil being placed at risk of harm.

- 4.5. Staff members will ensure that fear of sharing information does not stand in the way of their responsibility to promote the welfare and safety of pupils.
- 4.6. The schools also recognises the particular importance of inter-agency working in identifying and preventing child sexual exploitation (CSE).

4.7. Wigan Encompass

As part of school's commitment to keeping children safe, we have signed up to implement the principles and aims of the Encompass Model.

The purpose of Wigan Encompass is to safeguard and support children and young people who have been involved in or witness to a domestic abuse incident. Domestic abuse impacts on children in a number of ways. Children are at increased risk of physical injury during an incident, either by accident or because they attempt to intervene. Even when not directly injured, children are greatly distressed by witnessing the physical and emotional suffering of a parent.

Encompass has been created to address this situation. It is the implementation of key partnership working between the police and schools. The aim of sharing information with local schools is to allow 'Key Adults' the opportunity of engaging with the child and to provide access to support that allows them to remain in a safe but secure familiar environment.

Following the report of an incident of domestic abuse, by 9.00am on the next school day the school's Key Adult will be informed that the child or young person has been involved in a domestic incident. This knowledge, given to schools through Operation Encompass, allows the provision of immediate early intervention through silent or overt support dependent upon the needs and wishes of the child.

The purpose and procedures in Operation Encompass have been shared with all parents and directors, is detailed as part of the school's Safeguarding Policy and published on our school website.

At Westleigh Methodist, the Key Adults are the Designated Safeguarding Leads and the Deputy DSLs.

5. Abuse and neglect

- 5.1. All members of staff will be aware that abuse, neglect and safeguarding issues are rarely standalone events that can be given a specific label and multiple issues often overlap one another.
- 5.2. All staff members will be aware of the indicators of abuse and the appropriate action to take following a pupil being identified as at potential risk of abuse or neglect.
- 5.3. When identifying pupils at risk of potential harm, staff members will look out for a number of indicators including, but not limited to, the following:
 - Injuries in unusual places, such as bite marks on the neck, that are also inconsistent with their age
 - Lack of concentration and acting withdrawn
 - Knowledge ahead of their age, e.g. sexual knowledge.
 - Use of explicit language

- Fear of abandonment
 - Depression and low self-esteem
- 5.4. All members of staff will be aware of the indicators of peer-on-peer abuse, such as those in relation to bullying, gender-based violence, sexual assaults and sexting.
 - 5.5. All staff will be aware of the necessary procedures to follow to prevent peer-on-peer abuse, as outlined in the Trust's Anti-Bullying Policy.
 - 5.6. All staff will be aware of the behaviours linked to drug taking, alcohol abuse, truancy and sexting, and will understand that these put pupils in danger.
 - 5.7. Staff members will be aware of the effects of a pupil witnessing an incident of abuse, such as witnessing domestic violence at home.

6. Types of abuse and neglect

- 6.1. **Abuse:** A form of maltreatment of a child which involves inflicting harm or failing to act to prevent harm. Children may be abused in a family, institutional or community setting by those known to them or, more rarely, by others, e.g. via the internet.
- 6.2. **Physical abuse:** A form of abuse which may involve actions such as hitting, throwing, burning, drowning and poisoning, or otherwise causing physical harm to a child. Physical abuse can also be caused when a parent fabricates the symptoms of, or deliberately induces, illness in a child.
- 6.3. **Emotional abuse:** A form of abuse which involves the emotional maltreatment of a child to cause severe and adverse effects on the child's emotional development. This may involve telling a child they are worthless, unloved, inadequate, not giving them the opportunities to express their views, deliberately silencing them, or often making them feel as though they are in danger.
- 6.4. **Sexual abuse:** A form of abuse which involves forcing or enticing a child to take part in sexual activities, not necessarily involving a high level of violence, and whether or not the child is aware of what is happening. This may involve penetrative assault, such as touching, or non-penetrative actions, such as looking at sexual images or encouraging children to behave in inappropriate ways.
- 6.5. **Neglect:** A form of abuse which involves the persistent failure to meet a child's basic physical and/or psychological needs, likely to result in serious impairment of a child's health or development. This may involve providing inadequate food, clothing or shelter, or the inability to protect a child from physical or emotional harm or ensure access to appropriate medical treatment.

7. Female genital mutilation (FGM)

- 7.1. For the purpose of this policy, "**female genital mutilation**", commonly referred to as FGM, is defined as the partial or total removal of the external female genitalia, or any other injury to the female genital organs.
- 7.2. All staff will be alert to the possibility of a girl being at risk of FGM, or already having suffered FGM. If staff members are worried about someone who is at risk of FGM or who has been a victim of FGM, they are required to share this information with social care and/or the police.
- 7.3. **[Emphasised for 2018]** Teaching staff are **legally required** to report to the police any

discovery, whether through disclosure by the victim or visual evidence, of FGM on a girl under the age of 18. Teachers failing to report such cases will face disciplinary action.

NB. The above does not apply to any suspected or at-risk cases, nor if the individual is over the age of 18. In such cases, local safeguarding procedures will be followed.

- 7.4. There are a range of potential indicators that a pupil may be at risk of FGM. While individually they may not indicate risk, if two or more indicators are present, this could signal a risk to the pupil.
- 7.5. Victims of FGM are most likely to come from communities that are known to adopt this practice. It is important to note that the pupil may not yet be aware of the practice or that it may be conducted on them, so it is important for staff to be sensitive when broaching the subject.
- 7.6. Indicators that may show a heightened risk of FGM include the following:
 - The socio-economic position of the family and their level of integration into UK society
 - Any girl with a mother or sister who has been subjected to FGM
 - Any girl withdrawn from PSHE
- 7.7. Indicators that may show FGM could take place soon include the following:
 - The risk of FGM increases when a female family elder is visiting from a country of origin
 - A girl may confide that she is to have a 'special procedure' or a ceremony to 'become a woman'
 - A girl may request help from a teacher if she is aware or suspects that she is at immediate risk
 - A girl, or her family member, may talk about a long holiday to her country of origin or another country where the practice is prevalent
- 7.8. It is important that staff are vigilant to the signs that FGM has already taken place so that help can be offered, enquiries can be made to protect others, and criminal investigations can begin.
- 7.9. Indicators that FGM may have already taken place include the following:
 - Difficulty walking, sitting or standing
 - Spending longer than normal in the bathroom or toilet
 - Spending long periods of time away from a classroom during the day with bladder or menstrual problems
 - Prolonged or repeated absences from school followed by withdrawal or depression
 - Reluctance to undergo normal medical examinations
 - Asking for help, but not being explicit about the problem due to embarrassment or fear
- 7.10. Teachers will not examine pupils, and so it is rare that they will see any visual evidence, but they will report to the police where an act of FGM appears to have been carried out. Unless the teacher has a good reason not to, they should also consider and discuss any such case with the DSL and involve CSCS as appropriate.
- 7.11. FGM is also included in the definition of 'honour-based' violence (HBV), which involves crimes that have been committed to defend the honour of the family and/or community, alongside forced marriage and breast ironing.

- 7.12. All forms of HBV are forms of abuse and will be treated and escalated as such.
- 7.13. Staff will be alert to the signs of HBV, including concerns that a child is at risk of HBV, or has already suffered from HBV, and will activate local safeguarding procedures if concerns arise.

8. Forced marriage

- 8.1. For the purpose of this policy, a **“forced marriage”** is defined as a marriage that is entered into without the full and free consent of one or both parties, and where violence, threats or any other form of coercion is used to cause a person to enter into the marriage. Forced marriage is classed as a crime in the UK.
- 8.2. As part of HBV, staff will be alert to the signs of forced marriage including, but not limited to, the following:
- Becoming anxious, depressed and emotionally withdrawn with low self-esteem
 - Showing signs of mental health disorders and behaviours such as self-harm or anorexia
 - Displaying a sudden decline in their educational performance, aspirations or motivation
 - Regularly being absent from school
 - Displaying a decline in punctuality
 - An obvious family history of older siblings leaving education early and marrying early
- 8.3. If staff members have any concerns regarding a child who may have undergone, is currently undergoing, or is at risk of, forced marriage, they will speak to the DSL and local safeguarding procedures will be followed – this could include referral to CSCS, the police or the Forced Marriage Unit.

9. Child sexual exploitation (CSE)

- 9.1. For the purpose of this policy, **“child sexual exploitation”** is defined as: a form of sexual abuse where an individual or group takes advantage of an imbalance of power to coerce, manipulate or deceive a child or young person into sexual activity, for either, or both, of the following reasons:
- a) In exchange for something the victim needs or wants
 - b) For the financial advantage or increased status of the perpetrator or facilitator
- 9.2. CSE does not always involve physical contact, as it can also occur online. It is also important to note that a child can be sexually exploited even if the sexual activity appears consensual.
- 9.3. The school has adopted the following procedure for handling cases of CSE, as outlined by the DfE:

Identifying cases

School staff members are aware of and look for the key indicators of CSE; these are as follows:

- Going missing for periods of time or regularly going home late
- Regularly missing lessons
- Appearing with unexplained gifts and new possessions

- Associating with other young people involved in exploitation
- Having older boyfriends or girlfriends
- Undergoing mood swings or drastic changes in emotional wellbeing
- Displaying inappropriate sexualised behaviour
- Suffering from sexually transmitted infections or becoming pregnant
- Displaying changes in emotional wellbeing
- Misusing drugs or alcohol

Referring cases

Where CSE, or the risk of it, is suspected, staff will discuss the case with the dedicated member of staff for child protection. If after discussion a concern still remains, local safeguarding procedures will be triggered, including referral to the LA.

Support

The LA and all other necessary authorities will then handle the matter to conclusion and the school will cooperate as needed.

10. [New for 2018] Honour based Violence

- 10.1. So-called 'honour-based' violence (HBV) encompasses incidents or crimes which have been committed to protect or defend the honour of the family and/or the community, including female genital mutilation (FGM), forced marriage, and practices such as breast ironing. Abuse committed in the context of preserving "honour" often involves a wider network of family or community pressure and can include multiple perpetrators. It is important to be aware of this dynamic and additional risk factors when deciding what form of safeguarding action to take. All forms of HBV are abuse (regardless of the motivation) and should be handled and escalated as such. Professionals in all agencies, and individuals and groups in relevant communities, need to be alert to the possibility of a child being at risk of HBV, or already having suffered HBV.
- 10.2 If staff have a concern regarding a child that might be at risk of HBV or who has suffered from HBV, they should speak to the designated safeguarding lead (or deputy). As appropriate, they will activate local safeguarding procedures, using existing national and local protocols for multi-agency liaison with police and children's social care. Where FGM has taken place, since 31 October 2015 there has been a mandatory reporting duty placed on teachers⁹⁹ that requires a different approach (see section 7).

11. [New for 2018] Homelessness

- 11.1. The DSL and deputy(s) will be aware of the contact details and referral routes in to the Local Housing Authority so that concerns over homelessness can be raised as early as possible.
- 11.2. Indicators that a family may be at risk of homelessness include the following:
- Household debt
 - Rent arrears
 - Domestic abuse
 - Anti-social behaviour
 - Any mention of a family moving home because "they have to"
- 11.3. Referrals to the Local Housing Authority do not replace referrals to CSCS where a child is being harmed or at risk of harm.
- 11.4. For 16- and 17-year-olds, homelessness may not be family-based and referrals to children's services will be made as necessary where concerns are raised.

12. [\[New for 2018\]](#) County lines criminal activity

- 12.1. County lines criminal activity refers to drug networks or gangs grooming and exploiting children to carry drugs and money from urban areas to suburban areas, rural areas and market and seaside towns.
- 12.2. Staff will be made aware of pupils with missing episodes who may have been trafficked for the purpose of transporting drugs.
- 12.3. Staff members who suspect a pupil may be vulnerable to, or involved in, this activity will immediately report all concerns to the DSL.
- 12.4. The DSL will consider referral to the National Referral Mechanism on a case-by-case basis.

13. [\[New for 2018\]](#) Pupils with family members in prison

- 13.1. Pupils with a family member in prison will be offered pastoral support as necessary.
- 13.2. They will receive a copy of '[Are you a young person with a family member in prison](#)' from Action for Prisoners' Families where appropriate and allowed the opportunity to discuss questions and concerns.

14. [\[New for 2018\]](#) Pupils required to give evidence in court

- 14.1. Pupils required to give evidence in criminal courts, either for crimes committed against them or crimes they have witnessed, will be offered appropriate pastoral support.
- 14.2. Pupils will also be provided with the booklet '[Going to Court](#)' from HM Courts and Tribunals Service where appropriate and allowed the opportunity to discuss questions and concerns.

15. [\[New for 2018\]](#) Contextual safeguarding

- 15.1. Safeguarding incidents can occur outside of school and can be associated with outside factors. School staff, particularly the DSL and their deputy(s), will always consider the context of incidents – this is known as contextual safeguarding.
- 15.2. Assessment of pupils' behaviour will consider whether there are wider environmental factors that are a threat to their safety and/or welfare.
- 15.3. The schools will provide as much contextual information as possible when making referrals to CSCS.

16. Preventing radicalisation

- 16.1. Protecting children from the risk of radicalisation is part of the Trust and schools' wider safeguarding duties.
- 16.2. The schools will actively assess the risk of pupils being drawn into terrorism.
- 16.3. Staff will be alert to changes in pupils' behaviour which could indicate that they may be in need of help or protection.
- 16.4. Staff will use their professional judgement to identify pupils who may be at risk of radicalisation and act appropriately, which may include making a referral to the Channel programme. The schools will work with local safeguarding arrangements as appropriate.

16.5. The schools will ensure that they engage with parents and families, as they are in a key position to spot signs of radicalisation. In doing so, the schools will assist and advise family members who raise concerns and provide information for support mechanisms.

16.6. Any concerns over radicalisation will be discussed with a child's parents, unless the school has reason to believe that the child would be placed at risk as a result.

Training

16.7. The DSL will undertake Prevent awareness training to be able to provide advice and support to other staff on how to protect children against the risk of radicalisation. All members of staff will also undertake Prevent awareness training every three years to ensure they are aware of the risk indicators and their duties regarding preventing radicalisation.

Risk indicators

16.8. Indicators of an identity crisis:

- Distancing themselves from their cultural/religious heritage
- Uncomfortable with their place in society

16.9. Indicators of a personal crisis:

- Family tensions
- A sense of isolation
- Low self-esteem
- Disassociation from existing friendship groups
- Searching for answers to questions about identity, faith and belonging

16.10. Indicators of vulnerability through personal circumstances:

- Migration
- Local community tensions
- Events affecting their country or region of origin
- Alienation from UK values
- A sense of grievance triggered by personal experience of racism or discrimination

16.11. Indicators of vulnerability through unmet aspirations:

- Perceptions of injustice
- Feelings of failure
- Rejection of civic life

16.12. Indicators of vulnerability through criminality:

- Experiences of dealing with the police
- Involvement with criminal groups

Making a judgement

16.13. When making a judgement, staff will ask themselves the following questions:

- Does the pupil have access to extremist influences?
- Does the pupil access the internet for the purposes of extremist activities (e.g. using closed network groups, accessing or distributing extremist material, contacting such groups covertly using Skype)?

- Is there a reason to believe that the pupil has been, or is likely to be, involved with extremist organisations?
- Is the pupil known to have possessed, or be actively seeking, extremist literature/other media likely to incite racial or religious hatred?
- Does the pupil sympathise with or support illegal/illicit groups?
- Does the pupil support groups with links to extremist activity?
- Has the pupil encountered peer, social, family or faith group rejection?
- Is there evidence of extremist ideological, political or religious influence on the pupil?
- Have international events in areas of conflict and civil unrest had a noticeable impact on the pupil?
- Has there been a significant shift in the pupil's outward appearance that suggests a new social, political or religious influence?
- Has the pupil come into conflict with family over religious beliefs, lifestyle or dress choices?
- Does the pupil vocally support terrorist attacks, either verbally or in their written work?
- Has the pupil witnessed or been the victim of racial or religious hate crime?
- Is there a pattern of regular or extended travel within the UK?
- Has the pupil travelled for extended periods of time to international locations?
- Has the pupil employed any methods to disguise their identity?
- Does the pupil have experience of poverty, disadvantage, discrimination or social exclusion?
- Does the pupil display a lack of affinity or understanding for others?
- Is the pupil the victim of social isolation?
- Does the pupil demonstrate a simplistic or flawed understanding of religion or politics?
- Is the pupil a foreign national or refugee, or awaiting a decision on their/their family's immigration status?
- Does the pupil have insecure, conflicted or absent family relationships?
- Has the pupil experienced any trauma in their lives, particularly trauma associated with war or sectarian conflict?
- Is there evidence that a significant adult or other person in the pupil's life has extremist views or sympathies?

16.14. Critical indicators include where the pupil is:

- In contact with extremist recruiters.
- Articulating support for extremist causes or leaders.
- Accessing extremist websites.
- Possessing extremist literature.
- Using extremist narratives and a global ideology to explain personal disadvantage.
- Justifying the use of violence to solve societal issues.
- Joining extremist organisations.
- Making significant changes to their appearance and/or behaviour.

16.15. Any member of staff who identifies such concerns, as a result of observed behaviour or reports of conversations, will report these to the DSL.

16.16. The DSL will consider whether a situation may be so serious that an emergency response is required. In this situation, a 999 call will be made; however, concerns are most likely to require a police investigation as part of the Channel programme, in the first instance.

Channel programme

- 16.17. Safeguarding children is a key role for both the Trust, the schools and the LA, which is implemented through the use of the Channel programme. This service shall be used where a vulnerable pupil is at risk of being involved in terrorist activities.
- 16.18. In cases where the school believes a pupil is potentially at serious risk of being radicalised, the Headteacher or DSL will contact the Channel programme.
- 16.19. The DSL will also support any staff making referrals to the Channel programme.
- 16.20. The Channel programme ensures that vulnerable children and adults of any faith, ethnicity or background, receive support before their vulnerabilities are exploited by those that would want them to embrace terrorism, and before they become involved in criminal terrorist-related activity.
- 16.21. The programme identifies individuals at risk, assesses the extent of that risk, and develops the most appropriate support plan for the individuals concerned, with multi-agency cooperation and support from the schools.
- 16.22. The delivery of the Channel programme may often overlap with the implementation of the LA's or schools' wider safeguarding duty, especially where vulnerabilities have been identified that require intervention from CSCS, or where the individual is already known to CSCS.

Extremist speakers

- 16.23. Speakers who may promote extremist views will be prevented from using the schools' premises.

Building children's resilience

- 16.24. The schools will:
- Provide a safe environment for debating controversial issues.
 - Promote fundamental British values, alongside pupils' spiritual, moral, social and cultural development.
 - Allow pupils time to explore sensitive and controversial issues.
 - Provide pupils with the knowledge and skills to understand and manage potentially difficult situations, recognise risk, make safe choices and recognise where pressure from others threatens their personal safety and wellbeing.
 - Equip pupils to explore political and social issues critically, weigh evidence, debate, and make reasoned arguments.
 - Teach pupils about how democracy, government and law making/enforcement occur.
 - Teach pupils about mutual respect and understanding for the diverse national, regional, religious and ethnic identities of the UK.

Resources

- 16.25. The schools will utilise the following resources:
- Local safeguarding arrangements
 - Local police (contacted via 101 for non-emergencies)
 - The DfE's dedicated helpline (020 7340 7264)
 - The Channel awareness programme

- The [Educate Against Hate](#) website

17. A child missing from education

- 17.1. A child going missing from school is a potential indicator of abuse or neglect and, as such, these children are increasingly at risk of being victims of harm, exploitation or radicalisation.
- 17.2. Staff will monitor pupils that go missing from the school, particularly on repeat occasions, and report them to the DSL following normal safeguarding procedures.
- 17.3. The school will inform the LA of any pupil who fails to attend regularly or has been absent without the school's permission for a continuous period of 10 school days or more.

Admissions register

- 17.4. Pupils are placed on the admissions register at the beginning of the first day that is agreed by the school, or when the school has been notified that the pupil will first be attending.
- 17.5. The school will notify the LA within five days of when a pupil's name is added to the admissions register.
- 17.6. The school will ensure that the admissions register is kept up-to-date and accurate at all times and will inform parents when any changes occur.
- 17.7. **[New for 2018]** Two emergency contact details will be held for each pupil where possible.
- 17.8. Staff will monitor pupils who do not attend the school on the agreed date and will notify the LA at the earliest opportunity.
- 17.9. If a parent notifies the school that their child will live at a different address, the school will record the following information on the admissions register:
- The full name of the parent with whom the pupil will live
 - The new address
 - The date from when the pupil will live at that address
- 17.10. If a parent notifies the school that their child will be attending a different school, or is already registered a different school, the following information will be recorded on the admissions register:
- The name of the new school
 - The date on which the pupil first attended, or is due to attend, that school
- 17.11. Where a pupil moves to a new school, the school will use the internet system school2school to securely transfer pupils' data.
- 17.12. In order to ensure accurate data is collected to allow effective safeguarding, the school will inform the LA of any pupil who is going to be deleted from the admission register, in accordance with the Education (Pupil Registration) (England) Regulations 2006 (as amended), where they:
- Have been taken out of the school by their parents/carers, and are being educated outside the national education system, e.g. home education.
 - Have ceased to attend the school, and no longer live within a reasonable distance of the premises.

- Have been certified by the school's medical officer as unlikely to be in a fit state of health to attend, before ceasing to be of compulsory school age, and neither he/she nor his/her parent has indicated the intention to continue to attend the school after ceasing to be of compulsory school age.
- Have been in custody for a period of more than four months due to a final court order and the school does not reasonably believe they will be returning to the school at the end of that period.
- Have been permanently excluded.

17.13. The school will also remove a pupil from the admissions register where the school and LA has been unable to establish the pupil's whereabouts after making reasonable enquiries into their attendance.

17.14. If a pupil is to be removed from the admissions register, the school will provide the LA with the following information:

- The full name of the pupil
- The full name and address of any parent with whom the pupil lives
- At least one telephone number of the parent with whom the pupil lives
- The full name and address of the parent with whom the pupil is going to live, and the date that the pupil will start living there, if applicable
- The name of the pupil's new school and the pupil's expected start date there, if applicable
- The grounds for removal from the admissions register under regulation 8 of the Education (Pupil Registration) (England) Regulations 2006 (as amended)

17.15. The school will work with the LA to establish methods of making returns for pupils back into the school.

17.16. The school will highlight to the LA where they have been unable to obtain necessary information from parents, e.g. where an address is unknown.

17.17. The school will also highlight any other necessary contextual information including safeguarding concerns.

18. Pupils with SEND

18.1. The schools recognise that pupils with SEND can face additional safeguarding challenges and understand that further barriers may exist when determining abuse and neglect in this group of pupils.

18.2. Staff will be aware of the following:

- Certain indicators of abuse such as behaviour, mood and injury may relate to the pupil's disability without further exploration; however, it should never be assumed that a child's indicators relate only to their disability
- Pupils with SEND can be disproportionately impacted by things like bullying, without outwardly showing any signs
- Communication barriers may exist, as well as difficulties in overcoming these barriers

18.3. When reporting concerns or making referrals for pupils with SEND, the above factors will always be taken into consideration.

18.4. When managing a safeguarding issue relating to a pupil with SEND, the DSL will liaise with the school's SENCO, as well as the pupil's family where appropriate, to ensure that the pupil's needs are effectively met.

19. [New for 2018] Alternative provision

19.1. The schools will remain responsible for a pupil's welfare during their time at an alternative provider.

19.2. When placing a pupil with an alternative provider, the school will obtain written confirmation that the provider has conducted all relevant safeguarding checks on staff.

20. [New for 2018] Homestay exchange

visits School-arranged homestays in UK

20.1. Where the school is arranging for a visiting child to be provided with care and accommodation in the UK in the home of a family to which the child is not related, the responsible adults are considered to be in regulated activity for the period of the stay.

20.2. In such cases, the school is the regulated activity provider; therefore, the school will obtain all the necessary information required, including a DBS enhanced certificate with barred list information, to inform its assessment of the suitability of the responsible adults.

20.3. Where criminal record information is disclosed, the school will consider, alongside all other information, whether the adult is a suitable host.

20.4. In addition to the responsible adults, the school will consider whether a DBS enhanced certificate should be obtained for anyone else aged over 16 in the household.

School-arranged homestays abroad

20.5. The school will liaise with partner schools to discuss and agree the arrangements in place for the visit.

20.6. The school will consider, on a case-by-case basis, whether to contact the relevant foreign embassy or High Commission of the country in question to ascertain what checks may be possible in respect of those providing homestay outside of the UK.

20.7. The school will use its professional judgement to assess whether the arrangements are appropriate and sufficient to safeguard every child involved in the exchange.

20.8. Pupils will be provided with emergency contact details to use where an emergency occurs or a situation arises that makes them feel uncomfortable.

Privately arranged homestays

20.9. Where a parent or pupil arranges their own homestay, this is a private arrangement and the school is not the regulated activity provider.

21. [New for 2018] Private fostering

21.1. Where the school becomes aware of a pupil being privately fostered, they will notify the LA as soon as possible to allow the LA to conduct any necessary checks.

22. Concerns about a pupil

22.1. [New for 2018] If a member of staff has any concern about a child's welfare, they will act on them immediately by speaking to the DSL or a deputy.

22.2. All staff members are aware of the procedure for reporting concerns and understand their responsibilities in relation to confidentiality and information sharing, as outlined in this policy.

22.3. Where the DSL is not available to discuss the concern with, staff members will contact the deputy DSL with the matter.

22.4. If a referral is made about a child by anyone other than the DSL, the DSL will be informed as soon as possible.

22.5. The LA will make a decision regarding what action is required within one working day of the referral being made and will notify the referrer.

22.6. Staff are required to monitor a referral if they do not receive information from the LA regarding what action is necessary for the pupil.

22.7. If the situation does not improve after a referral, the DSL will ask for reconsideration to ensure that their concerns have been addressed and that the situation improves for the pupil.

22.8. If early help is appropriate, the case will be kept under constant review. If the pupil's situation does not improve, a referral will be considered.

22.9. All concerns, discussions and decisions made, as well as the reasons for making those decisions, will be recorded in writing by the DSL and kept securely in a locked cabinet in the Principal's room.

22.10. If a pupil is in immediate danger, a referral will be made to CSCS and/or the police immediately.

22.11. If a pupil has committed a crime, such as sexual violence, the police will be notified without delay.

22.12. Where there are safeguarding concerns, the school will ensure that the pupil's wishes are always taken into account, and that there are systems available for pupils to provide feedback and express their views.

22.13. When responding to safeguarding concerns, staff members will act calmly and supportively, ensuring that the pupil feels like they are being listened to and believed.

22.14. An inter-agency assessment will be undertaken where a child and their family could benefit from coordinated support from more than one agency. These assessments will identify what help the child and family require in preventing needs escalating to a point where intervention would be needed.

23. [New for 2018] Early help

23.1. Early help means providing support as soon as a problem emerges, at any point in a child's life.

23.2. Any pupil may benefit from early help, but in particular staff will be alert to the potential need for early help for pupils who:

- Are disabled and have specific additional needs.
- Have SEND (whether or not they have a statutory EHC plan).
- Are young carers.
- Show signs of being drawn into anti-social or criminal behaviour, including gang involvement and association with organised crime groups.
- Are frequently missing/going missing from care or from home.
- Misuse drugs or alcohol.
- Are at risk of modern slavery, trafficking or exploitation.
- Are in a family circumstance presenting challenges such as substance abuse, adult mental health problems or domestic abuse.
- Are returned home to their family from care.
- Show early signs of abuse and/or neglect.
- Are at risk of being radicalised or exploited.
- Are privately fostered.

23.3. Early help will also be used to address non-violent harmful sexual behaviour to prevent escalation.

23.4. All staff will be made aware of the local early help process and understand their role in it.

23.5. The DSL will take the lead where early help is appropriate.

24. Managing referrals

24.1. The reporting and referral process outlined in Appendix A will be followed accordingly.

24.2. All staff members, in particular the DSL, will be aware of the LA's arrangements in place for managing referrals. The DSL will provide staff members with clarity and support where needed.

24.3. When making a referral to CSCS or other external agencies, information will be shared in line with confidentiality requirements and will only be shared where necessary to do so.

24.4. The DSL will work alongside external agencies, maintaining continuous liaison, including multi-agency liaison where appropriate, in order to ensure the wellbeing of the pupils involved.

24.5. The DSL will work closely with the police to ensure the school does not jeopardise any criminal proceedings, and to obtain help and support as necessary.

24.6. Where a pupil has been harmed or is in immediate danger or at risk of harm, the referrer will be notified of the action that will be taken within one working day of a referral being made. Where this information is not forthcoming, the referrer will contact the assigned

social worker for more information.

- 24.7. The school will not wait for the start or outcome of an investigation before protecting the victim and other pupils: this applies to criminal investigations as well as those made by CSCS.
- 24.8. Where CSCS decide that a statutory investigation is not appropriate, the school will give consideration to referring the incident again if it is believed that the pupil is at risk of harm.
- 24.9. Where CSCS decide that a statutory investigation is not appropriate and the school agrees with this decision, the school will give consideration to the use of other support mechanisms, such as early help and pastoral support.
- 24.10. At all stages of the reporting and referral process, the pupil will be informed of the decisions made, actions taken and reasons for doing so.
- 24.11. Discussions of concerns with parents will only take place where this would not put the pupil or others at potential risk of harm.
- 24.12. The school will work closely with parents to ensure that the pupil, as well as their family, understands that the arrangements in place, such as in-school interventions, are effectively supported and know where they can access additional support.

25. Concerns about staff members and safeguarding practices

- 25.1. If a staff member has concerns about another member of staff, it will be raised with the Principal.
- 25.2. If the concern is with regards to the Principal, it will be referred to the Director of Academy Excellence.
- 25.3. Any concerns regarding the safeguarding practices at the school will be raised with the SLT, and the necessary whistleblowing procedures will be followed, as outlined in the Whistleblowing Policy.
- 25.4. If a staff member feels unable to raise an issue with the SLT, they should access other whistleblowing channels such as the NSPCC whistleblowing helpline (0800 028 0285).
- 25.5. Any allegations of abuse made against staff members will be dealt with in accordance with the school's Procedures for dealing with allegations of abuse against adults who work with children.

26. Dealing with allegations of abuse against staff

- 26.1. All allegations will be dealt with in line with the Acorn rust's Procedures for dealing with allegations of abuse against adults who work with children.
- 26.2. **[Updated for 2018]** Where an allegation is substantiated and the individual is dismissed or resigns, the school will consider referring the matter to the Teaching Regulation Agency (TRA) for consideration for a prohibition order.
- 26.3. **[New for 2018]** If a case manager is concerned about the welfare of other children in the community following a staff member's suspension, they may report this concern to CSCS.

27. [Updated for 2018] Allegations of abuse against other pupils (peer-on-peer abuse)

Sexual harassment

27.1. Sexual harassment refers to unwanted conduct of a sexual nature that occurs online or offline. Sexual harassment violates a child's dignity and makes them feel intimidated, degraded or humiliated, and can create a hostile, sexualised or offensive environment. If left unchallenged, sexual harassment can create an atmosphere that normalises inappropriate behaviour and may lead to sexual violence. Sexual harassment includes:

- Sexual comments.
- Sexual "jokes" and taunting.
- Physical behaviour, such as deliberately brushing against another pupil.
- Online sexual harassment, including non-consensual sharing of images and videos and consensual sharing of sexual images and videos (often known as sexting), inappropriate comments on social media, exploitation, coercion and threats – online sexual harassment may be isolated or part of a wider pattern.

Sexual violence

27.2. Sexual violence refers to the three following offences:

Rape: A person (A) commits an offence of rape if he intentionally penetrates the vagina, anus or mouth of another person (B) with his penis, B does not consent to the penetration and A does not reasonably believe that B consents.

Assault by Penetration: A person (A) commits an offence if s/he intentionally penetrates the vagina or anus of another person (B) with a part of her/his body or anything else, the penetration is sexual, B does not consent to the penetration and A does not reasonably believe that B consents.

Sexual Assault: A person (A) commits an offence of sexual assault if s/he intentionally touches another person (B), the touching is sexual, B does not consent to the touching and A does not reasonably believe that B consents.

Harmful sexual behaviours

27.3. The term **harmful sexual behaviour** is used to describe behaviour that is problematic, abusive and violent, and that may cause developmental damage. Harmful sexual behaviour may include:

- Using sexually explicit words and phrases.
- Inappropriate touching.
- Sexual violence or threats.
- Full penetrative sex with other children or adults.
- Sexual interest in adults or children of very different ages to their own.
- Forceful or aggressive sexual behaviour.
- Compulsive habits.
- Sexual behaviour affecting progress and achievement.
- Using sexually explicit words and phrases.
- Inappropriate touching.
- Sexual violence or threats.
- Full penetrative sex.

27.4. Sexual behaviour can also be harmful if one of the children is much older (especially where there is two years or more difference, or where one child is pre-pubescent and the other

is not).

A preventative approach

- 27.5. In order to prevent peer-on-peer abuse and address the wider societal factors that can influence behaviour, the schools will educate pupils about abuse, its forms and the importance of discussing any concerns and respecting others through the curriculum, worship/assemblies and PSHE lessons.
- 27.6. The schools will also ensure that pupils are taught about safeguarding, including online safety, as part of a broad and balanced curriculum in PSHE lessons, RSE and group sessions. Such content will be age and stage of development specific, and tackle issues such as the following:
- Healthy relationships
 - Respectful behaviour
 - Gender roles, stereotyping and equality
 - Body confidence and self-esteem
 - Prejudiced behaviour
 - That sexual violence and sexual harassment is always wrong
 - Addressing cultures of sexual harassment
- 27.7. Pupils are allowed an open forum to talk about concerns and sexual behaviour. They are taught how to raise concerns and make a report, including concerns about their friends or peers, and how a report will be handled

Awareness

- 27.8. All staff will be aware that pupils of any age and sex are capable of abusing their peers and will never tolerate abuse as “banter” or “part of growing up”.
- 27.9. All staff will be aware that peer-on-peer abuse can be manifested in many different ways, including sexting and gender issues, such as girls being sexually touched or assaulted, and boys being subjected to hazing/initiation type of violence which aims to cause physical, emotional or psychological harm.
- 27.10. All staff will be made aware of the heightened vulnerability of pupils with SEND, who are three times more likely to be abused than their peers. Staff will not assume that possible indicators of abuse relate to the pupil’s SEND and will always explore indicators further.
- 27.11. LGBT children can be targeted by their peers. In some cases, children who are perceived to be LGBT, whether they are or not, can be just as vulnerable to abuse as LGBT children. The school’s response to boy-on-boy and girl-on-girl sexual violence and sexual harassment will be equally as robust as it is for incidents between children of the opposite sex.
- 27.12. Pupils will be made aware of how to raise concerns or make a report and how any reports will be handled. This includes the process for reporting concerns about friends or peers.

Support available if a child has been harmed, is in immediate danger or at risk of harm

- 27.13. If a child has been harmed, is in immediate danger or is at risk of harm, a referral will be made to CSCS.
- 27.14. Within one working day, a social worker will respond to the referrer to explain the action

that will be taken.

Support available if early help, section 17 and/or section 47 statutory assessments are appropriate

- 27.15. If early help, section 17 and/or section 47 statutory assessments (assessments under the Children Act 1989) are appropriate, school staff may be required to support external agencies. The DSL and deputies will support staff as required.

Support available if a crime may have been committed

- 27.16. Rape, assault by penetration and sexual assaults are crimes. Where a report includes such an act, the police will be notified, often as a natural progression of making a referral to CSCS. The DSL will be aware of the local process for referrals to both CSCS and the police.
- 27.17. Whilst the age of criminal responsibility is 10 years of age, if the alleged perpetrator is under 10, the principle of referring to the police remains. In these cases, the police will take a welfare approach rather than a criminal justice approach.
- 27.18. The schools have a close relationship with the local police force and the DSL will liaise closely with the local police presence.

Support available if reports include online behaviour

- 27.19. Online concerns can be especially complicated. The schools recognise that there is potential for an online incident to extend further than the local community and for a victim, or the alleged perpetrator, to become marginalised and excluded both online and offline. There is also strong potential for repeat victimisation if the content continues to exist.
- 27.20. If the incident involves sexual images or videos held online, the [Internet Watch Foundation](#) will be consulted to have the material removed.
- 27.21. Staff will not view or forward illegal images of a child. If they are made aware of such an image, they will contact the DSL.

Managing disclosures

- 27.22. Victims will always be taken seriously, reassured, supported and kept safe. Victims will never be made to feel like they are causing a problem or made to feel ashamed.
- 27.23. If a friend of a victim makes a report or a member of staff overhears a conversation, staff will take action – they will never assume that someone else will deal with it. The basic principles remain the same as when a victim reports an incident; however, staff will consider why the victim has not chosen to make a report themselves and the discussion will be handled sensitively and with the help of CSCS where necessary. If staff are in any doubt, they will speak to the DSL.
- 27.24. Where an alleged incident took place away from the school or online but involved pupils from the school, the school's duty to safeguard pupils remains the same.
- 27.25. All staff will be trained to handle disclosures. Effective safeguarding practice includes:
- Never promising confidentiality at the initial stage.
 - Only sharing the report with those necessary for its progression.
 - Explaining to the victim what the next steps will be and who the report will be passed to.

- Recognising that the person the child chose to disclose the information to is in a position of trust.
- Being clear about boundaries and how the report will be progressed.
- Not asking leading questions and only prompting the child with open questions.
- Waiting until the end of the disclosure to immediately write a thorough summary. If notes must be taken during the disclosure, it is important to still remain engaged and not appear distracted.
- Only recording the facts as the child presents them – not the opinions of the note taker.
- Where the report includes an online element, being aware of searching, screening and confiscation advice and [UKCCIS sexting advice](#).
- Wherever possible, managing disclosures with two staff members present (preferably with the DSL or a deputy as one of the staff members).
- Informing the DSL or deputy as soon as possible after the disclosure if they could not be involved in the disclosure.

27.26. The DSL will be informed of any allegations of abuse against pupils with SEND. They will record the incident in writing and, working with the SENCO, decide what course of action is necessary, with the best interests of the pupil in mind at all times.

Confidentiality

27.27. The schools will only engage staff and agencies required to support the victim and/or be involved in any investigation. If a victim asks the school not to tell anyone about the disclosure, the school cannot make this promise. Even without the victim's consent, the information may still be lawfully shared if it is in the public interest and protects children from harm.

27.28. The DSL will consider the following when making confidentiality decisions:

- Parents will be informed unless it will place the victim at greater risk.
- If a child is at risk of harm, is in immediate danger or has been harmed, a referral will be made to CSCS.
- Rape, assault by penetration and sexual assaults are crimes – reports containing any such crimes will be passed to the police.

27.29. The DSL will weigh the victim's wishes against their duty to protect the victim and others. If a referral is made against the victim's wishes, it will be done so extremely carefully and the reasons for referral will be explained to the victim. Appropriate specialist support will always be offered.

Anonymity

27.30. There are legal requirements for anonymity where a case is progressing through the criminal justice system. The schools will do all they can to protect the anonymity of children involved in any report of sexual violence or sexual harassment. They will carefully consider, based on the nature of the report, which staff will be informed and what support will be in place for the children involved.

27.31. When deciding on the steps to take, the schools will consider the role of social media in potentially exposing victims' identities and facilitating the spread of rumours.

Risk assessment

27.32. The DSL or a deputy will make an immediate risk and needs assessment any time there is a report of sexual violence. For reports of sexual harassment, a risk assessment will be

considered on a case-by-case basis. Risk assessments are not intended to replace the detailed assessments of experts, and for incidents of sexual violence it is likely that a professional risk assessment by a social worker or sexual violence specialist will be required.

27.33. Risk assessments will consider:

- The victim.
- The alleged perpetrator.
- Other children at the school, especially any actions that are appropriate to protect them.

27.34. Risk assessments will be recorded (either on paper or electronically) and kept under review.

Taking action following a disclosure

27.35. The DSL or a deputy will decide the school's initial response, taking into consideration:

- The victim's wishes.
- The nature of the incident.
- The ages and developmental stages of the children involved.
- Any power imbalance between the children.
- Whether the incident is a one-off or part of a pattern.
- Any ongoing risks.
- Any related issues and the wider context, such as whether there are wider environmental factors in a child's life that threaten their safety and/or welfare.
- The best interests of the child.
- That sexual violence and sexual harassment are always unacceptable and will not be tolerated.

27.36. Immediate consideration will be given as to how to support the victim, alleged perpetrator and any other children involved.

27.37. For reports of rape and assault by penetration, whilst the school establishes the facts, the alleged perpetrator will be removed from any classes shared with the victim. The school will consider how to keep the victim and alleged perpetrator apart on school premises, and on transport where applicable. These actions will not be seen as a judgement of guilt on the alleged perpetrator.

27.38. For reports of sexual violence and sexual harassment, the proximity of the victim and alleged perpetrator and the suitability of shared classes, premises and transport will be considered immediately.

27.39. In all cases, the initial report will be carefully evaluated and the wishes of the victim, nature of the allegations and requirement to protect all children will be taken into consideration.

Managing the report

27.40. The decision of when to inform the alleged perpetrator of a report will be made on a case-by-case basis. If a report is being referred to CSCS or the police, the school will speak to the relevant agency to discuss informing the alleged perpetrator.

27.41. There are four likely outcomes when managing reports of sexual violence or sexual harassment:

1. Managing internally

2. Providing early help
3. Referral to CSCS
4. Reporting to the police

27.42. Whatever outcome is chosen, it will be underpinned by the principle that sexual violence and sexual harassment is never acceptable and will not be tolerated. All concerns, discussion, decisions and reasons behind decisions will be recorded either on paper or electronically.

27.43. The following situations are statutorily clear and do not allow for contrary decisions:

- A child under the age of 13 can never consent to sexual activity.
- The age of consent is 16.
- Sexual intercourse without consent is rape.
- Rape, assault by penetration and sexual assault are defined in law.
- Creating and sharing sexual photos and videos of children under 18 is illegal – including children making and sending images and videos of themselves.

Managing internally

27.44. In some cases, e.g. one-off incidents, the school may decide to handle the incident internally through behaviour and bullying policies and by providing pastoral support.

Providing early help

27.45. The school may decide that statutory interventions are not required, but that pupils may benefit from early help – providing support as soon as a problem emerges. This approach can be particularly useful in addressing non-violent harmful sexual behaviour and may prevent escalation of sexual violence.

Referral to CSCS

27.46. If a child has been harmed, is at risk of harm or is in immediate danger, the school will make a referral to CSCS. Parents will be informed unless there is a compelling reason not to do so (if referral will place the victim at risk). This decision will be made in consultation with CSCS.

27.47. The school will not wait for the outcome of an investigation before protecting the victim and other children.

27.48. The DSL will work closely with CSCS to ensure that the school's actions do not jeopardise any investigation. Any related risk assessment will be used to inform all decisions.

27.49. If CSCS decide that a statutory investigation is not appropriate, the school will consider referring the incident again if they believe the child to be in immediate danger or at risk of harm.

27.50. If the school agrees with the decision made by CSCS, they will consider the use of other support mechanisms such as early help, pastoral support and specialist support.

Reporting to the police

27.51. Reports of rape, assault by penetration or sexual assault will be passed on to the police – even if the alleged perpetrator is under 10 years of age. Generally, this will be in parallel

with referral to CSCS. The DSL and deputies will follow the local process for referral.

- 27.52. Parents will be informed unless there is a compelling reason not to do so. Where parents are not informed, it is essential for the school to support the child with any decision they take, in unison with CSCS and any appropriate specialist agencies.
- 27.53. The DSL and Safeguarding Director will agree what information will be disclosed to staff and others, in particular the alleged perpetrator and their parents. They will also discuss the best way to protect the victim and their anonymity.
- 27.54. The DSL will be aware of local arrangements and specialist units that investigate child abuse.
- 27.55. In some cases, it may become clear that the police will not take further action, for whatever reason. In these circumstances, the school will continue to engage with specialist support for the victim as required.

Bail conditions

- 27.56. Police bail is only used in exceptional circumstances. It is unlikely that a child will be placed on police bail if alternative measures can be used to mitigate risks.
- 27.57. The school will work with CSCS and the police to support the victim, alleged perpetrator and other children (especially witnesses) during criminal investigations. The school will seek advice from the police to ensure they meet their safeguarding responsibilities.
- 27.58. The term 'released under investigation' (RUI) is used to describe alleged perpetrators released in circumstances that do not warrant the application of bail.
- 27.59. Where bail is deemed necessary, the school will work with CSCS and the police to safeguard children – ensuring that the victim can continue in their normal routine and continue to receive a suitable education.

Managing delays in the criminal justice system

- 27.60. The school will not wait for the outcome (or even the start) of criminal proceedings before protecting the victim, alleged perpetrator and other children. The associated risk assessment will be used to inform any decisions made.
- 27.61. The DSL will work closely with the police to ensure the school does not jeopardise any criminal proceedings, and to obtain help and support as necessary.

The end of the criminal process

- 27.62. Risk assessments will be updated if the alleged perpetrator receives a caution or is convicted. If the perpetrator remains in the same school as the victim, the school will set out clear expectations regarding the perpetrator, including their behaviour and any restrictions deemed reasonable and proportionate with regards to the perpetrator's timetable.
- 27.63. The school will ensure that the victim and perpetrator remain protected from bullying and harassment (including online).

27.64. Where an alleged perpetrator is found not guilty or a case is classed as requiring “no further action”, the school will offer support to the victim and alleged perpetrator for as long as is necessary. The victim is likely to be traumatised and the fact that an allegation cannot be substantiated does not necessarily mean that it was unfounded. The school will discuss decisions with the victim and offer support.

27.65. The alleged perpetrator is also likely to require ongoing support, as they have also been through a difficult and upsetting experience.

Ongoing support for the victim

27.66. Any decisions regarding safeguarding and supporting the victim will be made with the following considerations in mind:

- The terminology the school uses to describe the victim
- The age and developmental stage of the victim
- The needs and wishes of the victim
- Whether the victim wishes to continue in their normal routine
- The victim will not be made to feel ashamed about making a report
- What a proportionate response looks like

27.67. Victims may not disclose the whole picture immediately and they may be more comfortable talking about the incident on a piecemeal basis; therefore, a dialogue will be kept open and the victim can choose to appoint a designated trusted adult.

27.68. Victims may struggle in a normal classroom environment. Whilst it is important not to isolate the victim, the victim may wish to be withdrawn from lessons and activities at times. This will only happen when the victim wants it to, not because it makes it easier to manage the situation.

27.69. The school will provide a physical space for victims to withdraw to.

27.70. Victims may require support for a long period of time and the school will be prepared to offer long-term support in liaison with relevant agencies.

27.71. Everything possible will be done to prevent the victim from bullying and harassment as a result of any report they have made.

27.72. If the victim is unable to remain in the school, alternative provision or a move to another school will be considered – this will only be considered at the request of the victim and following discussion with their parents.

27.73. If the victim does move to another school, the DSL will inform the school of any ongoing support needs and transfer the child protection file.

Ongoing support for the alleged perpetrator

27.74. When considering the support required for an alleged perpetrator, the school will take into account:

- The terminology they use to describe the alleged perpetrator or perpetrator.

- The balance of safeguarding the victim and providing the alleged perpetrator with education and support.
- The reasons why the alleged perpetrator may have abused the victim – and the support necessary.
- Their age and developmental stage.
- What a proportionate response looks like.
- Whether the behaviour is a symptom of their own abuse or exposure to abusive practices and/or materials.

27.75. When making a decision, advice will be taken from CSCS, specialist sexual violence services and the police as appropriate.

27.76. If the alleged perpetrator moves to another school (for any reason), the DSL will inform the destination school of any ongoing support needs and transfer the child protection file.

27.77. The school will work with professionals as required to understand why the abuse took place and provide a high level of support to help the pupil understand and overcome the reasons for their behaviour and reduce the likelihood of them abusing again.

Disciplining the alleged perpetrator

27.78. Disciplinary action can be taken whilst investigations are ongoing and the fact that investigations are ongoing does not prevent the school reaching its own conclusion and imposing an appropriate penalty.

27.79. The school will make such decisions on a case-by-case basis, with the DSL taking a leading role. The school will take into consideration whether any action would prejudice an investigation and/or subsequent prosecution. The police and CSCS will be consulted where necessary.

27.80. The school will also consider whether circumstances make it unreasonable or irrational for the school to make a decision about what happened while an investigation is considering the same facts.

27.81. Disciplinary action and support can take place at the same time.

27.82. The school will be clear whether action taken is disciplinary, supportive or both.

Shared classes

27.83. Once the DSL has decided to progress a report, they will again consider whether the victim and alleged perpetrator will be separated in classes, on school premises and on school transport – balancing the school's duty to educate against its duty to safeguard. The best interests of the pupil will always come first.

27.84. Where there is a criminal investigation into rape or assault by penetration, the alleged perpetrator will be removed from classes with the victim and potential contact on school premises and transport will be prevented.

- 27.85. Where a criminal investigation into rape or assault by penetration leads to a conviction or caution, in all but the most exceptional circumstances, this will constitute a serious breach of discipline and result in the view that allowing the perpetrator to remain in the school would harm the education or welfare of the victim and potentially other pupils.
- 27.86. Where a criminal investigation into sexual assault leads to a conviction or caution, the school will consider suitable sanctions and permanent exclusion. If the perpetrator will remain at the school, the school will keep the victim and perpetrator in separate classes and manage potential contact on school premises and transport. The nature of the conviction or caution, alongside the wishes of the victim, will inform any discussions made.
- 27.87. Where a report of sexual assault does not lead to a police investigation, this does not mean that the offence did not happen or that the victim has lied. Both the victim and alleged perpetrator will be affected and appropriate support will be provided. Considerations regarding sharing classes and potential contact will be made on a case-by-case basis.
- 27.88. In all cases, the school will record its decisions and be able to justify them. The needs and wishes of the victim will always be at the heart of the process.

Working with parents and carers

- 27.89. In most sexual violence cases, the school will work with the parents of both the victim and alleged perpetrator. For cases of sexual harassment, these decisions will be made on a case-by-case basis.
- 27.90. The school will meet the victim's parents with the victim present to discuss the arrangements being put in place to safeguard the victim, and to understand their wishes in terms of support arrangements and the progression of the report.
- 27.91. Schools will also meet with the parents of the alleged perpetrator to discuss arrangements that will impact their child, such as moving them out of classes with the victim. Reasons behind decisions will be explained and the support being made available will be discussed. The DSL or a deputy will attend such meetings, with agencies invited as necessary.
- 27.92. Clear policies regarding how the school will handle reports of sexual violence and how victims and alleged perpetrators will be supported will be made available to parents.

Safeguarding other children

- 27.93. Children who have witnessed sexual violence, especially rape and assault by penetration, will be provided with support.
- 27.94. It is likely that children will "take sides" following a report, and the school will do everything in its power to protect the victim, alleged perpetrator and witnesses from bullying and harassment.

27.95. The school will keep in mind that contact may be made between the victim and alleged perpetrator and that harassment from friends of both parties could take place via social media and do everything in its power to prevent such activity.

27.96. As part of the school's risk assessment following a report, transport arrangements will be considered, as it is a potentially vulnerable place for both a victim and alleged perpetrator. Schools will consider any additional support that can be put in place.

28. Communication and confidentiality

28.1. All child protection and safeguarding concerns will be treated in the strictest of confidence in accordance with the Acorn Trust's General Data Protection Regulation Policy.

28.2. Where there is an allegation or incident of sexual abuse or violence, the victim is entitled to anonymity by law; therefore, the school will consult its policy and agree what information will be disclosed to staff and others, in particular the alleged perpetrator and their parents.

28.3. Where a report of sexual violence or sexual harassment is progressing through the criminal justice system, the school will do all it can to protect the anonymity of the pupils involved in the case.

28.4. Concerns will only be reported to those necessary for its progression and reports will only be shared amongst staff members and with external agencies on a need-to-know basis.

28.5. All schools have the Toot Toot reporting system as one medium for reporting safeguarding issues.

28.6. During disclosure of a concern by a pupil, staff members will not promise the pupil confidentiality and will ensure that they are aware of what information will be shared, with whom and why.

28.7. Where it is in the public interest, and protects pupils from harm, information can be lawfully shared without the victim's consent, e.g. if doing so would assist the prevention, detection or prosecution of a serious crime.

- Before doing so, the DSL will weigh the victim's wishes against their duty to protect the victim and others.
- Where a referral is made against the victim's wishes, it is done so carefully with the reasons for the referral explained to the victim and specialist support offered.

28.8. Depending on the nature of a concern, the DSL will discuss the concern with the parents of the pupils involved.

28.9. Discussions with parents will not take place where they could potentially put a pupil at risk of harm.

28.10. Discussion with the victim's parents will relate to the arrangements being put in place to safeguard the victim, with the aim of understanding their wishes in terms of support arrangements and the progression of the report.

- 28.11. Discussion with the alleged perpetrator's parents will have regards to the arrangements that will impact their child, such as moving classes etc., with the reasons behind decisions being explained and the available support discussed.
- 28.12. External agencies will be invited to these discussions where necessary.
- 28.13. Where confidentiality or anonymity has been breached, the school will implement the appropriate disciplinary procedures as necessary and will analyse how damage can be minimised and future breaches be prevented.
- 28.14. **[New for 2018]** Where a pupil is leaving the school, the DSL will consider whether it is appropriate to share any information with the pupil's new provider, in addition to the child protection file, that will allow the new provider to support the pupil and arrange appropriate support for their arrival.

29. Online safety

- 29.1. **[New for 2018]** As part of a broad and balanced curriculum, all pupils will be made aware of online risks and taught how to stay safe online.
- 29.2. Through training, all staff members will be made aware of the following:
- Pupil attitudes and behaviours which may indicate they are at risk of potential harm online
 - The procedure to follow when they have a concern regarding a pupil's online activity
- 29.3. The schools will ensure that suitable filtering systems are in place to prevent children accessing terrorist and extremist material, in accordance with the Acorn Trust's ICT, Online Safety and Internet Policy.
- 29.4. The use of mobile phones by staff and pupils is closely monitored by the schools, in accordance with the protocol in the staff handbooks.
- 29.5. The schools will ensure that the use of filtering and monitoring systems does not cause "over blocking" which may lead to unreasonable restrictions as to what pupils can be taught regarding online teaching.

30. Upskirting

- 30.1. Under the Voyeurism (Offences) Act 2019, it is an offence to operate equipment and to record an image beneath a person's clothing without consent and with the intention of observing, or enabling another person to observe, the victim's genitals or buttocks (whether exposed or covered with underwear), in circumstances where their genitals, buttocks or underwear would not otherwise be visible, for a specified purpose.
- 30.2. A "specified purpose" is namely:
- Obtaining sexual gratification (either for themselves or for the person they are enabling to view the victim's genitals, buttocks or underwear).
 - To humiliate, distress or alarm the victim.
 - "Operating equipment" includes enabling, or securing, activation by another person without that person's knowledge, e.g. a motion activated camera.
- 30.3. Upskirting will not be tolerated by the school.
- 30.4. Any incidents of upskirting will be reported to the DSL who will then decide on the next steps to take, which may include police involvement.

31. Sports clubs and extracurricular activities

- 31.1. Clubs and extracurricular activities hosted by external bodies, e.g. charities or companies, will work in collaboration with the school to effectively safeguard pupils and adhere to local safeguarding arrangements.
- 31.2. Paid and volunteer staff running sports clubs and extracurricular activities are aware of their safeguarding responsibilities and promote the welfare of pupils.
- 31.3. Paid and volunteer staff understand how they should respond to child protection concerns and how to make a referral to CSCS or the police, if necessary.
- 31.4. All national governing bodies of sport that receive funding from either Sport England or UK Sport, must aim to meet the Standards for Safeguarding and Protecting Children in Sport.

32. Safer recruitment

- 32.1. An enhanced DBS check with barred list information will be undertaken for all staff members engaged in regulated activity. A person will be considered to be in 'regulated activity' if, as a result of their work, they:
 - Are responsible on a daily basis for the care or supervision of children.
 - Regularly work in the school at times when children are on the premises.
 - Regularly come into contact with children under 18 years of age.
- 32.2. **[New for 2018]** The DfE's [DBS Workforce Guides](#) will be consulted when determining whether a position fits the child workforce criteria.

Pre-employment checks

- 32.3. The Trust's HR department will assess the suitability of prospective employees by:
 - Verifying the candidate's identity, preferably from the most current photographic ID and proof of address except where, for exceptional reasons, none is available.
 - Obtaining a certificate for an enhanced DBS check with barred list information where the person will be engaged in regulated activity.
 - Obtaining a separate barred list check if an individual will start work in regulated activity before the DBS certificate is available.
 - Checking that a candidate to be employed as a teacher is not subject to a prohibition order issued by the Secretary of State, using the [TRA Teacher Services' System](#).
 - Verifying the candidate's mental and physical fitness to undertake their working responsibilities, including asking relevant questions about disability and health to establish whether they have the physical and mental capacity for the specific role.
 - Checking the person's right to work in the UK. If there is uncertainty about whether an individual needs permission to work in the UK, the advice set out on the [Gov.UK](#) website will be followed.
 - If the person has lived or worked outside the UK, making any further checks that the school considers appropriate; this includes checking for any teacher sanctions or restrictions that an EEA professional regulating authority has imposed.
 - Checking professional experience, QTS and qualifications as appropriate using Teacher Services.

- **[Clarified for 2018]** Confirming that an individual taking up a management position is not subject to a section 128 direction.

32.4. A DBS certificate will be obtained from candidates before or as soon as practicable after appointment. An online update check may be undertaken through the DBS update service if an applicant has subscribed to it and gives their permission.

Internal candidates

32.5. **[New for 2018]** If an individual moves from a position within the school that did not involve the provision of education to one that does, it will be treated as if the individual were a new member of staff and all required pre-appointment checks will be carried out. Aside from this specific circumstance, the school is not required to request a DBS check or barred list check for staff moving roles internally.

32.6. **[New for 2018]** Where required, references from internal candidates will be sought and always be scrutinised before appointment.

Trainees/students

32.7. **[New for 2018]** Where applicants for initial teacher training or teaching assistant training are salaried by the school, the school will ensure that enhanced DBS checks with barred list information are carried out.

32.8. **[New for 2018]** For all fee-funded trainees and other training work placements, written confirmation will be obtained to ensure that an enhanced DBS certificate and barred list check has been carried out.

Trustees/Governors

[Updated for 2018] The Trust and its schools requires enhanced DBS checks on all members of the local advisory/governing board and the Trustee board. Before an individual becomes a trustee/governor, the school will carry out an enhanced DBS check and confirm their identity. Where a trustee/governor also engages in regulated activity, a barred list check will also be requested. An additional check is required for those in management positions, to ensure that they are not prohibited under section 128 provisions. Where a barred list check has been performed, the section 128 direction will also be shown and will not require a separate check. If the individual lives or has lived outside of the UK, consideration will be given as to further checks that may be necessary.

Those who have lived or worked outside of the UK

32.9. For those who have lived or worked outside of the UK, additional checks regarding teacher sanctions or restrictions will be conducted, this includes checking for any teacher sanctions or restrictions that an EEA professional regulating authority has imposed.

Barred list check

32.10. An enhanced DBS check may be requested for anyone working in school that is not in regulated activity but does not have a barred list check.

32.11. If there are concerns about an applicant, an enhanced DBS check with barred list information may be requested, even if he/she has worked in regulated activity in the three months prior to appointment.

32.12. Written information about their previous employment history will be obtained from candidates and the appropriate checks undertaken to ensure information is not

contradictory or incomplete.

References

- 32.13. References will be obtained directly from referees and scrutinised, with all concerns satisfactorily resolved prior to confirmation of employment.
- 32.14. **[New for 2018]** References will only be accepted from a senior person and not from a colleague unless the senior persons in the company do not know the prospective employee.
- 32.15. References will be sought on all short-listed candidates, including where required internal ones, before an interview and checked on receipt to ensure that all specific questions were answered satisfactorily.
- 32.16. **[New for 2018]** References will be obtained prior to interviews taking place and discussed during interviews if received in time.
- 32.17. **[New for 2018]** Open testimonials will not be considered.
- 32.18. Information about past disciplinary actions or allegations will be considered carefully when assessing an applicant's suitability for a post.
- 32.19. **[New for 2018]** Information sourced directly from a candidate or online source will be carefully vetted to ensure they originate from a credible source.

Volunteers

- 32.20. No volunteer will be left unsupervised with a pupil or allowed to work in regulated activity until the necessary checks have been obtained.
- 32.21. An enhanced DBS certificate with barred list check will be obtained for all new volunteers in regulated activity that will regularly teach or look after children on an unsupervised basis or provide personal care on a one-off basis (eg. helping a child with eating and drinking for reasons of illness, or care in connection with toileting washing, bathing and dressing for reasons of age, illness or disability)
- 32.22. All volunteers will sign a code of conduct that includes information on safeguarding procedures.
- 32.23. **[Clarified for 2018]** A supervised volunteer who regularly teaches or looks after children is not in regulated activity.
- 32.24. The schools will obtain an enhanced DBS certificate with barred list check for existing volunteers that provide pastoral care.
- 32.25. Unless there is cause for concern, the schools will not request any new DBS certificates with barred list check for existing volunteers that have already been checked.
- 32.26. A risk assessment will be undertaken for volunteers not engaged in regulated activity when deciding whether to seek an enhanced DBS check.

Contractors

- 32.27. The schools will ensure that any contractor or employee of the contractor working on the premises has been subject to the appropriate level of DBS check.
- 32.28. Checks will be conducted to ensure that the contractor presenting themselves for work is the same person on whom the checks have been made.

- 32.29. Contractors without a DBS check will be supervised if they will have contact with children. The identity of the contractor will be checked upon their arrival at the school.

Data retention

- 32.30. DBS certificates will be securely destroyed as soon as practicable, but not retained for longer than six months from receipt.
- 32.31. A copy of the other documents used to verify the successful candidate's identity, right to work and required qualifications will be kept for the personnel file. The personnel file will be held for the duration of the employee's employment plus six years.

Referral to the DBS

- 32.32. The schools will refer to the DBS anyone who has harmed a child or poses a risk of harm to a child, or if there is reason to believe the member of staff has committed an offence and has been removed from working in regulated activity.

33. Single central record (SCR)

- 33.1. The school keeps an SCR which records all staff, including supply staff and teacher trainees on salaried routes, who work at the school.
- 33.2. All members of the proprietor body are also recorded on the SCR.
- 33.3. The following information is recorded on the SCR:
- An identity check
 - A barred list check
 - An enhanced DBS check
 - A prohibition from teaching check
 - A section 128 check
 - A check of professional qualifications
 - A check to determine the individual's right to work in the UK
 - Additional checks for those who have lived or worked outside of the UK
- 33.4. For supply staff and other third party staff such as Elite, the school will also record whether written confirmation from the employment business supplying the member of staff has been received, which indicates that all of the necessary checks have been conducted and the date that confirmation was received.
- 33.5. If any checks have been conducted for volunteers, this will also be recorded on the SCR.
- 33.6. **[New for 2018]** If risk assessments are conducted to assess whether a volunteer should be subject to a DBS check, the risk assessment will be recorded.

34. Staff suitability

- 34.1. All centres providing care for pupils under the age of eight must ensure that staff and volunteers working in these settings are not disqualified from doing so under the Childcare (Disqualification) Regulations 2009.
- 34.2. A person may be disqualified if they:
- Have certain orders or other restrictions placed upon them.

- Have committed certain offences.

34.3. All staff members and volunteers (as staff members and volunteers can be asked to work throughout the school) are required to sign the staff suitability declaration form confirming that they are not disqualified from working in a schooling environment.

34.4. A disqualified person will not be permitted to continue working at the school, unless they apply for and are granted a waiver from Ofsted. The Trust's HR dept will provide support with this process.

35. Training

35.1. Staff members will undergo safeguarding and child protection training at induction, which will be regularly updated on an annual basis.

35.2. [\[New for 2018\]](#) The induction training will cover:

- The Safeguarding and Child Protection Policy
- The Positive Behaviour Management Policy
- The Staff Code of Conduct
- The safeguarding response to Children who go Missing from Education
- The identity of the DSL and any deputies
- The role of the DSL and deputy DSLs
- Use of the CPOMS system

35.3. All staff members will also receive regular safeguarding and child protection updates as required, but at least annually.

35.4. All staff members have received a copy of Part One of the Keeping Children safe in education guidance 2018, or will receive a copy as part of their induction.

35.5. **[New for 2018]** Training will cover, at a minimum:

- The issues surrounding sexual violence and sexual harassment.
- Contextual safeguarding.
- How to keep previously LAC safe.
- Child criminal exploitation and the need to refer cases to the National Referral Mechanism.
- Female Genital Mutilation
- Pupils with family members in prison
- Pupils required to give evidence in court
- Updated Safeguarding and Child Protection Policy

35.6. Staff will receive opportunities to contribute towards and inform the safeguarding arrangements in the school.

35.7. The DSL will undergo updated child protection training every two years, as well as additional training to refresh their skills and knowledge at regular intervals (at least annually) to allow them to keep up-to-date with any developments relevant to their role. See training log in appendices.

35.8. The DSL will undergo annual Prevent awareness training which will enable them to understand and support the school with regards to the Prevent duty and equip them with the knowledge needed to advise staff. All members of staff will also undertake Prevent awareness training every three years to ensure they are aware of the risk indicators and their duties regarding preventing radicalisation. Certificates of completion will be kept in staff personnel files.

35.9. **[New for 2018]** The DSL and their deputy(s) will undergo online safety training to help them recognise the additional risks that pupils with SEND face online, for example, from online bullying, grooming and radicalisation, to ensure they have the capability to support pupils with SEND to stay safe online

35.10. Online training will also be conducted for all staff members as part of the overall safeguarding approach.

36. Monitoring and review

35.1. This policy is reviewed annually by the Trust and the schools.

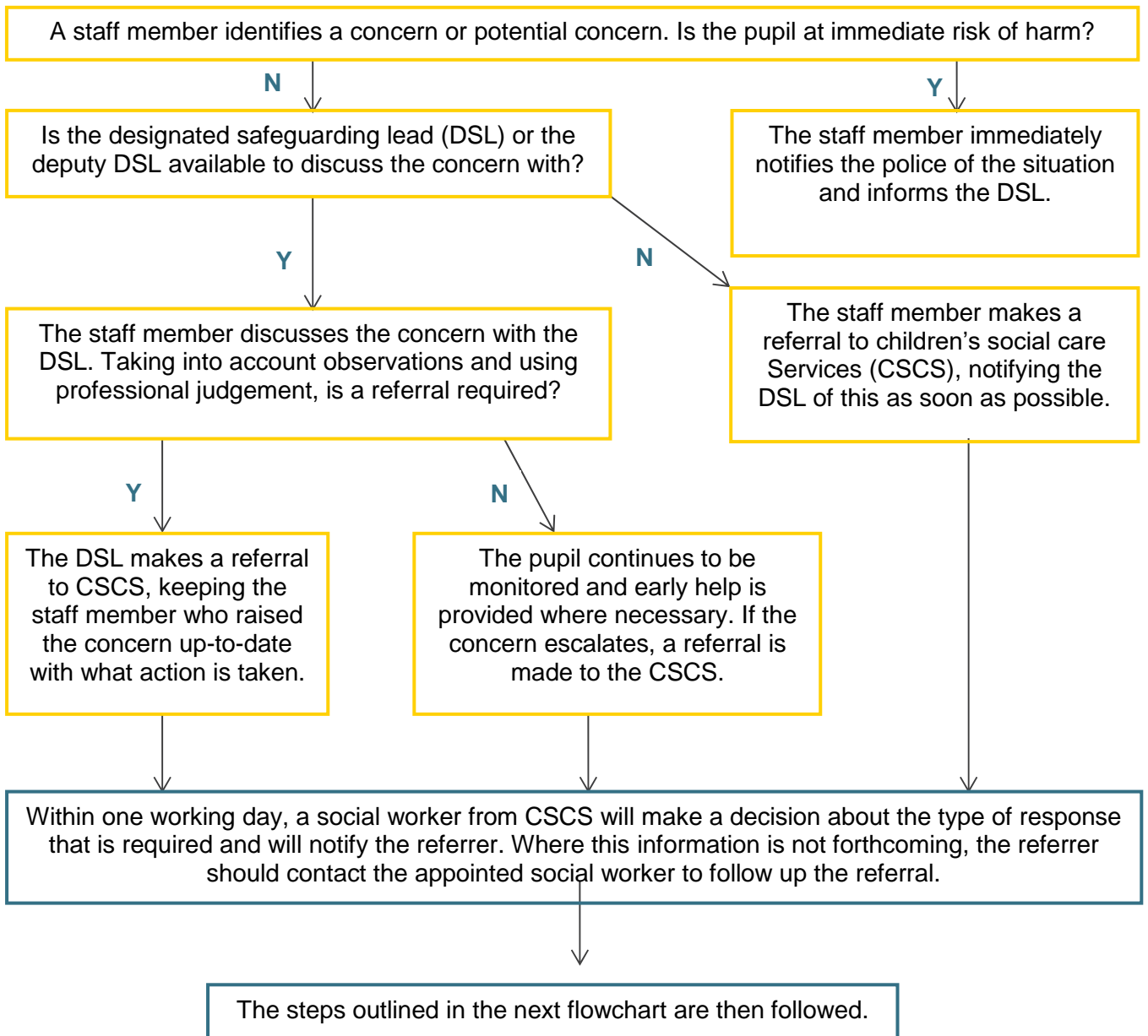
- 35.2. Any changes made to this policy by the Trust and the schools will be communicated to all members of staff.
- 35.3. All members of staff are required to familiarise themselves with all processes and procedures outlined in this policy as part of their induction programme.
- 35.4. This policy is available publicly on the school website and parents/carers are made aware of their entitlement to have a copy if required. This policy is also on the school Bus compliance site for staff access and is located on the staff room notice board.
- 35.5. The next scheduled review date for this policy is September 2019.

Safeguarding Reporting Process

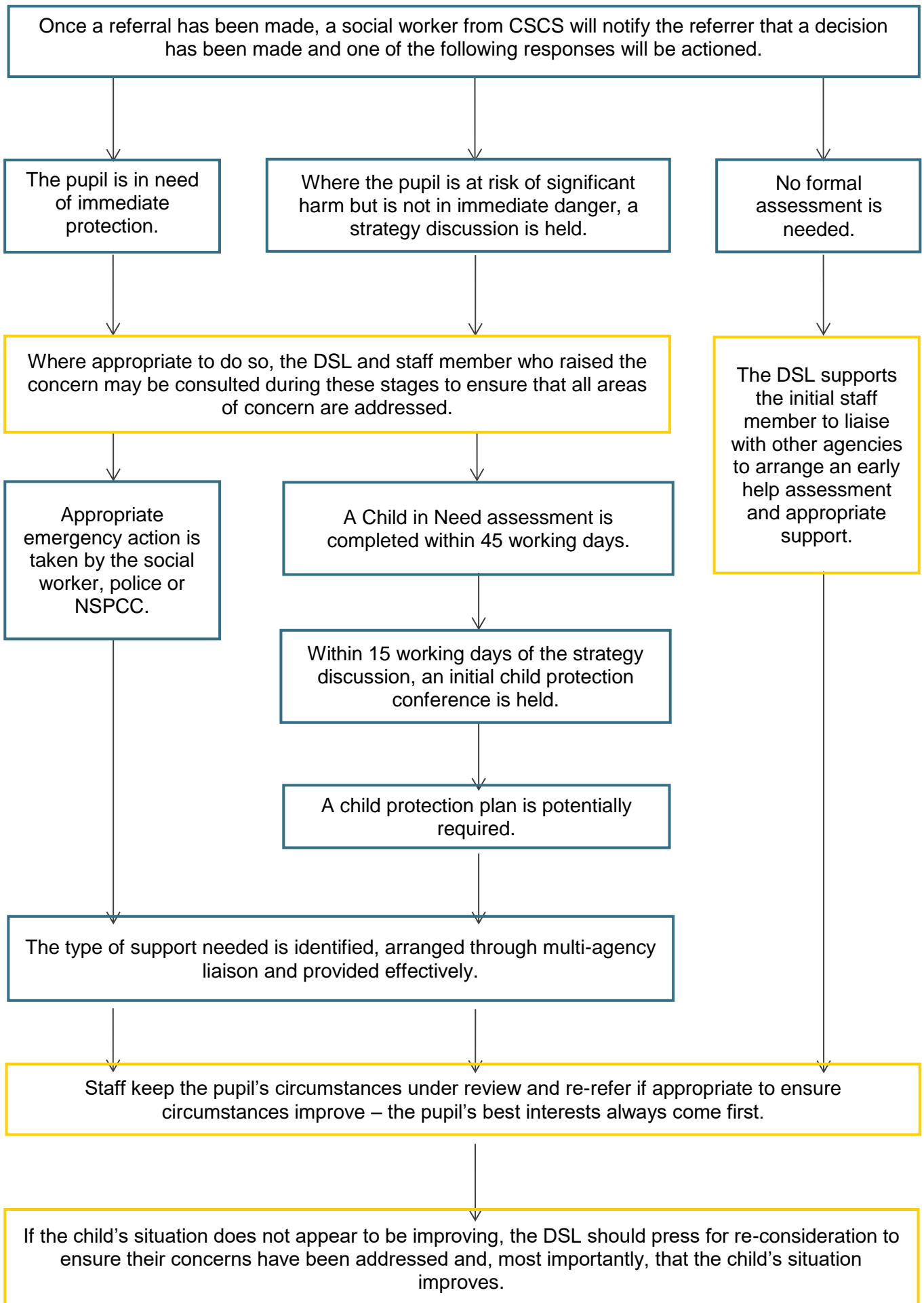
The process outlined within the first section should be followed where a staff member has a safeguarding concern about a child. Where a referral has been made, the process outlined in the 'After a referral is made' section should be followed.

The actions taken by the school are outlined in yellow, whereas actions taken by another agency are outlined in blue.

Before a referral is made



After a referral is made



Contacts and Advice

Expert organisations

- [Barnardo's](#)
- [Lucy Faithfull Foundation](#)
- [NSPCC](#)
- [Rape Crisis](#)
- [University of Bedfordshire: Contextual Safeguarding](#)
- [UK Safer Internet Centre](#)

Support for victims

- [Anti-Bullying Alliance](#)
- [MoJ Victim Support](#)
- [Rape Crisis](#)
- [The Survivor's Trust](#)
- [Victim Support](#)

Toolkits

- [Brook](#)
- [NSPCC](#)
- [Safeguarding Unit, Farrer and Co, and Carlene Firmin, MBE, University of Bedfordshire](#)

Further information on confidentiality and information sharing

- [Gillick Competency Fraser Guidelines](#)
- [Government Information Sharing Advice](#)
- [Information Commissioner's Office: Education](#)
- [NSPCC: Things to Know and Consider](#)

Further information on sexting

- [UK Council for Child Internet Safety: Sexting Advice](#)
- [London Grid for Learning – Collection of Advice](#)

Support for parents

- [Parentzone](#)
- [Parentsafe – London Grid for Learning](#)
- [CEOP Thinkuknow – Challenging Harmful Sexual Attitudes and their Impact](#)
- [CEOP Thinkuknow – Supporting Positive Sexual Behaviour](#)